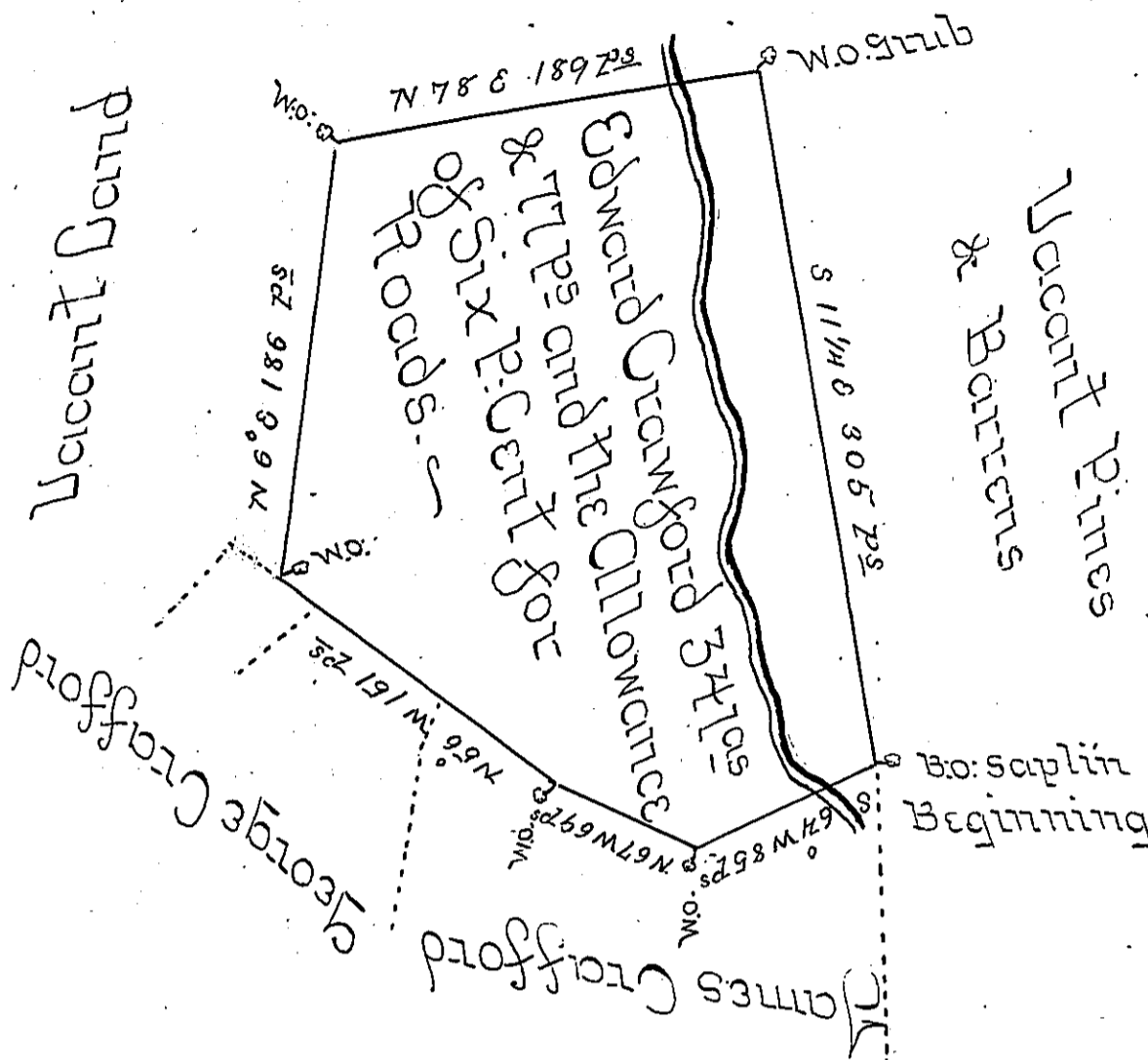


William Vanlers Claim



A Draught of a Tract of Land Situate in Gilford Township Cumberland County Containing Three Hundred & Forty one Acres & Seventy Seven perches and the usual Allowance of Six P Cent for Roads, Surveyed for Edward Crawford May the Ninth day Anno Domini 1752: In Pursuance of the Honourable the Proprietaries Warrant Dated the fourteenth Day of August Anno Domini, one Thousand Seven Hundred and Fifty One: - 1751.

John Armstrong U.S.

To John Lukens }
Surveyor General }

IN TESTIMONY that the above is a copy of the original remaining on file in the Department of Internal Affairs of Pennsylvania, made conformably to an Act of Assembly approved the 16th day of February, 1833, I have hereunto set my Hand and caused the Seal of said Department to be affixed at Harrisburg, this fifth day of April 1904.

James N. Brown
Secretary of Internal Affairs.